

# IR Summary for Nine Months (Apr.-Dec. 2023) <IFRS/Consolidated>

**Panasonic Group**

<https://holdings.panasonic/global/corporate/investors.html>

## Consolidated Financial Results for Apr.-Dec. '23

## Consolidated Financial Forecasts for FY3/24

(as of Oct. 30, 2023)

Net sales	6,300.3 billion yen (101%)
Adjusted operating profit*	318.4 billion yen (137%)
Operating profit	320.3 billion yen (137%)
Net profit attributable to Panasonic Holdings Corporation stockholders	399.2 billion yen (245%)
Basic Earnings per share attributable to Panasonic Holdings Corporation stockholders	171.01 yen
EBITDA**	649.3 billion yen (117%)

Net sales	8,400.0 billion yen (100%)
Adjusted operating profit*	400.0 billion yen (127%)
Operating profit	400.0 billion yen (139%)
Net profit attributable to Panasonic Holdings Corporation stockholders	460.0 billion yen (173%)
Basic Earnings per share attributable to Panasonic Holdings Corporation stockholders	197.07 yen
EBITDA**	850.0 billion yen (118%)

FY3/24 refers to the fiscal year ending March 2024. % represent changes compared with the previous fiscal year.

\* Adjusted operating profit = Sales - Cost of sales - SG&A

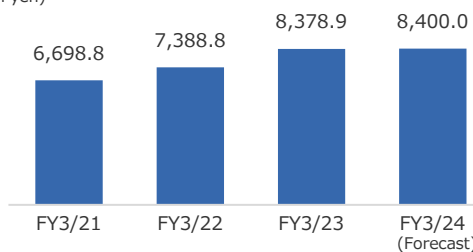
\*\* Total amount of Operating profit, Depreciation (Tangible assets including Property, plant and equipment/ Right-of-use assets) and Amortization (Intangible assets).

Adjusted with:

- amount equivalent to depreciation corresponding to underlying assets that are applied with Lease accounting treatment as a lessor
- impact of temporary accounting treatment related to "re-evaluation of assets and liabilities" after Blue Yonder acquisition

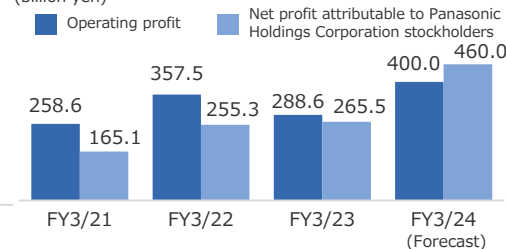
## Consolidated Net Sales (Full Years)

(billion yen)



## Operating Profit / Net Profit (Full Years)

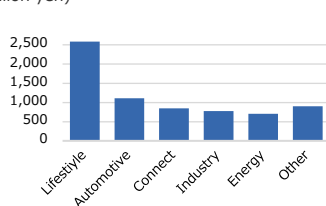
(billion yen)



## Information by Segment (Apr.-Dec. '23)

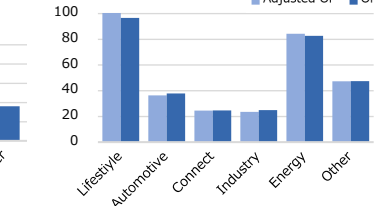
### Sales

(billion yen)



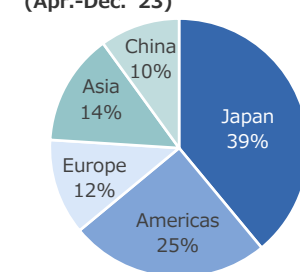
### Operating Profit (OP)

(billion yen)



## Sales by Region (Apr.-Dec. '23)

(Apr.-Dec. '23)



## Stock Data (as of Sep. 30, 2023)

Number of shares issued	2,454,261,297 (Inc. 119,949,672 shares of treasury stock)	Unit of stock	100	Number of shareholders	439,101	Stock exchange listings	Tokyo Nagoya
-------------------------	--	---------------	-----	------------------------	---------	-------------------------	-----------------

### Breakdown of issued shares by type of shareholders (%)

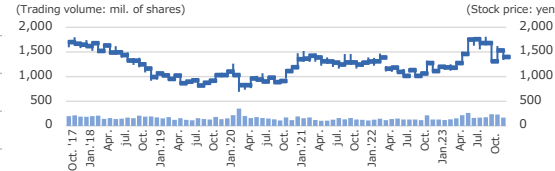
Shareholder Type	Percentage (%)
Japanese Financial Institutions, etc.	33.7
Overseas Investors, etc.	36.6
Other Corporations	5.6
Treasury Stock	4.9
Individuals & Others	19.2

### Annual dividends per share (yen)

Fiscal Year	Dividend (yen)
FY3/23	30
FY3/22	30
FY3/21	20
FY3/20	30
FY3/19	30

### Stock price and trading volume

(At Tokyo Stock Exchange on a monthly basis)



## Corporate Information (as of Dec. 31, 2023)

Company Name:	Panasonic Holdings Corporation (TSE Code: 6752)
Head Office Location:	1006 Kadoma, Kadoma City, Osaka 571-8501, Japan
Founded:	Mar. 1918 (incorporated in Dec. 1935)
Representative Director, President:	Yuki Kusumi
Number of Employees:	230,025 (consolidated)
Common Stock:	259.4 billion yen
Number of Consolidated Subsidiaries:	505

## Product Highlights

### Lifestyle



### Automotive



### Connect



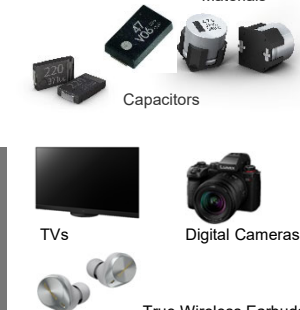
### Industry



### Energy



### Entertainment & Communication



### Housing

