

Corporate Data (As of March 31, 2021)

Panasonic Corporation and Subsidiaries

Years ended March 31

Corporate Data

Company Name: Panasonic Corporation
(TSE Securities Code: 6752)

Founded: March 1918 (Incorporated in December 1935)

Head Office Location: 1006, Oaza Kadoma, Kadoma-shi,
Osaka 571-8501, Japan

Stated Capital: 258,981 million yen

Consolidated Companies (including parent company):
523 companies

Companies under the Equity Method:
69 companies

Number of Employees: 243,540 persons

Share Data

Number of Shares Issued: 2,453,563,397 shares
(Including 120,239,132 shares held by Panasonic)

Number of Shareholders: 477,323

TSE Securities Code: 6752

Unit of Stock: 100

Stock Exchange Listings: Tokyo, Nagoya

Transfer Agent for Common Stock:
Sumitomo Mitsui Trust Bank, Limited
5-33, Kitahama, 4-chome, Chuo-ku, Osaka-shi,
Osaka 540-8639, Japan
Phone: +81-3-3323-7111

American Depositary Receipts (ADRs)

Depository Bank: J.P. Morgan Chase Bank, N.A.
Stock Exchange: U.S. Over-the-Counter (OTC) Market
ADR Ratio: 1 ADR = 1 Share
Symbol: PCRFY

Stock Transfer Handling Office

Shareowner Services
P.O. Box 64504
St. Paul, MN 55164-0504, U.S.A.
Phone: +1-800-990-1135 (U.S.: toll free)
+1-651-453-2128 (International)

	3/2012	3/2013	3/2014	3/2015	3/2016	3/2017	3/2018	3/2019	3/2020	3/2021
Number of Shares Issued (in thousands of shares)	2,453,053	2,453,053	2,453,053	2,453,053	2,453,053	2,453,053	2,453,053	2,453,053	2,453,326	2,453,563
Number of Shareholders	557,102	577,756	499,728	469,295	514,129	486,489	485,053	505,402	488,540	477,323
Distribution by Type of Shareholders (%)										
Japanese Financial Institutions, etc.	34.2	28.3	27.2	30.1	30.6	30.8	31.9	34.8	34.7	35.0
Overseas Investors, etc.	21.9	25.3	33.2	32.9	31.2	32.6	33.4	28.9	30.3	31.8
Other Corporations	8.4	8.3	7.4	7.1	6.9	7.0	6.8	6.8	6.1	6.2
Individuals and Others	29.7	32.3	26.4	24.1	25.9	24.7	23.0	24.6	24.0	22.1
Treasury Stock	5.8	5.8	5.8	5.8	5.4	4.9	4.9	4.9	4.9	4.9
Total	100.0	100.0	100.0	100.0	100.0	100.0	100.0	100.0	100.0	100.0

Major Shareholders

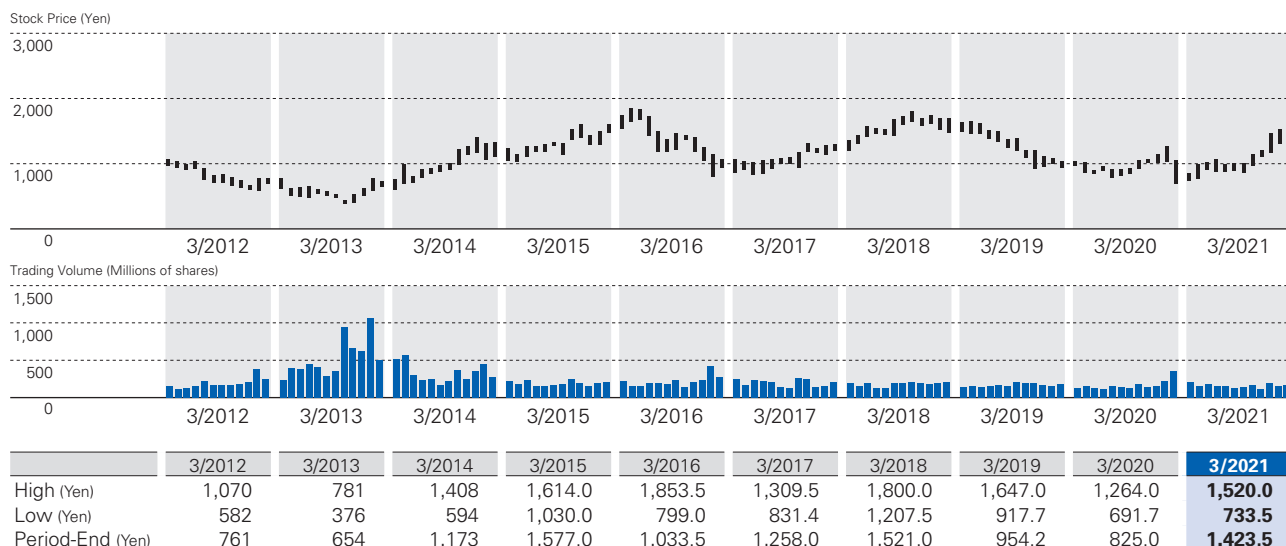
Name	Share ownership (in thousands of shares)	Percentage of total issued shares (%)
The Master Trust Bank of Japan, Ltd. (trust account)	207,193	8.87
Custody Bank of Japan, Ltd. (trust account)	174,974	7.49
NIPPON LIFE INSURANCE COMPANY	69,056	2.95
Custody Bank of Japan, Ltd. (trust account 7)	46,859	2.00
Panasonic Corporation Employee Shareholding Association	38,992	1.67
SUMITOMO LIFE INSURANCE COMPANY	37,465	1.60
MOXLEY AND CO LLC	35,324	1.51
STATE STREET BANK WEST CLIENT - TREATY 505234	34,165	1.46
Custody Bank of Japan, Ltd. (trust account 5)	32,701	1.40
Matsushita Real Estate Co., Ltd.	29,121	1.24

Notes: 1. The figures in share ownership are rounded down to the nearest thousand shares.

2. Shareholding ratio is calculated by deducting the Company's treasury stock (120,239,132) and rounded down to two decimal places.

3. The English names of foreign shareholders above are based on the General Shareholders Notification notified by Japan Securities Depository Center, Inc.

Company Stock Price and Trading Volume (Years ended March 31) Tokyo Stock Exchange monthly basis



Corporate Bonds

Unsecured Straight Bonds in Japan

Series	Years	Coupon rate (per annum)	Aggregate principal amount of issue	Maturity date
13th	7	0.568%	80 billion yen	March 18, 2022
14th	10	0.934%	100 billion yen	March 19, 2025
15th	5	0.190%	200 billion yen	Sept. 17, 2021
16th	7	0.300%	70 billion yen	Sept. 20, 2023
17th	10	0.470%	130 billion yen	Sept. 18, 2026
18th	6	0.230%	30 billion yen	March 5, 2026
19th	10	0.370%	70 billion yen	March 5, 2030
20th	3	0.080%	80 billion yen	Dec. 22, 2023
21st	5	0.190%	70 billion yen	Dec. 24, 2025
22nd	7	0.290%	20 billion yen	Dec. 24, 2027
23rd	10	0.390%	30 billion yen	Dec. 24, 2030

USD-Denominated Senior Notes

	Years	Coupon rate (per annum)	Aggregate principal amount of issue	Maturity date
Due 2022	3	2.536%	US\$ 1 billion	July 19, 2022
Due 2024	5	2.679%	US\$ 1 billion	July 19, 2024
Due 2029	10	3.113%	US\$ 500 million	July 19, 2029

External Recognition (As of August 31, 2021)

The Company has been selected as a constituent stock in the following indices.



FTSE4Good



FTSE Blossom Japan



2021 CONSTITUENT MSCI JAPAN ESG SELECT LEADERS INDEX

2021 CONSTITUENT MSCI JAPAN EMPOWERING WOMEN INDEX (WIN)

THE INCLUSION OF PANASONIC CORPORATION IN ANY MSCI INDEX, AND THE USE OF MSCI LOGOS, TRADEMARKS, SERVICE MARKS OR INDEX NAMES HEREIN, DO NOT CONSTITUTE A SPONSORSHIP, ENDORSEMENT OR PROMOTION OF PANASONIC CORPORATION BY MSCI OR ANY OF ITS AFFILIATES. THE MSCI INDEXES ARE THE EXCLUSIVE PROPERTY OF MSCI. MSCI AND THE MSCI INDEX NAMES AND LOGOS ARE TRADEMARKS OR SERVICE MARKS OF MSCI OR ITS AFFILIATES.



Please also refer to our Sustainability Data Book for more information about our approach to social and environmental initiatives.

<https://www.panasonic.com/global/corporate/sustainability/downloads.html>